

RM-SERIES CONVEYOR

Model: RM-2318

THE READY MIX & CONCRETE COMPANION



Conveyor

- 18" Wide Belt
- 35 Degree Troughed Belt
- Heavy Duty 4" CEMA C Idlers
- Adjustable Belt Tension
- 1-1/2" Tall Chevron Cleated Belt
- 1.5 cubic ft. Loading Hopper

Portable Undercarriage

- Adjustable Scissor Lifting Arms
- Tow-able Hitch
- 3500 lbs capacity Axle
- Conveyor Rest
- Hydraulic Incline lift adjustment
- Hydraulic Hand Pump

POWER DRIVE

110V Power
or
Honda Gas Engine



15 FEET MAX
7 FEET MIN

LOADING

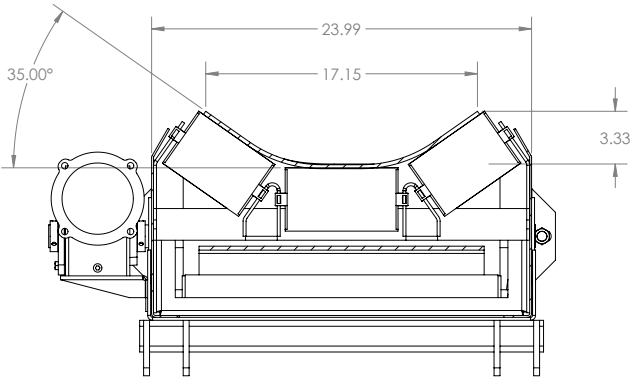
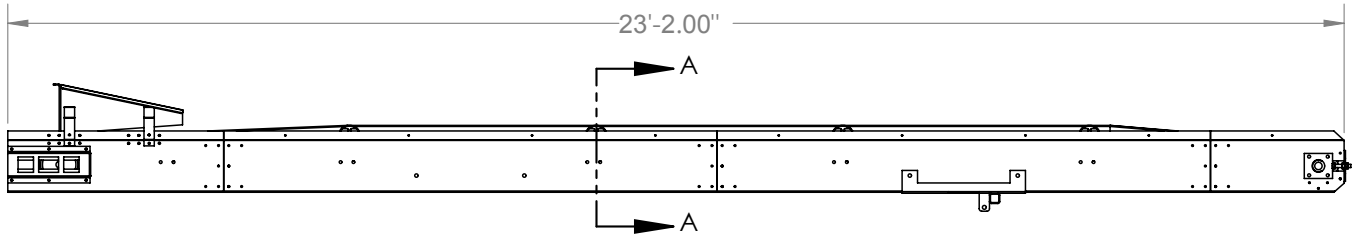
Ice, Steel Fibers,
Pigment and more

PORTABLE DOSING



Toll Free: 800-453-2447
www.redlinesystem.com

23' CONVEYOR DETAIL



Detail A

Note:
Belt Cleats not Shown

RM-2318 Model

- 23' Conveyor Length
- 15 ft. Tall Discharge Height
- Discharge Height Adjustment down to 7 ft.
- Includes Loading Hopper
- Steep Climb Belt 1-1/2" Tall Chevron Cleat
- 18" Wide Belt 2 ply Rubber Belt
- Standard with Electric Motor Drive
- Heavy Duty 8" OD Lagged Drive Pulley

Engineered Design

- Heavy Duty 4" CEMA C ROLLERS
- 35 Degree Trough Angle
- Modular Frame
- Optional Lengths and Accessories
- Belt speeds up to 300 Feet Per minute
- Easy Maintenance
- Grease-able Block Bearings

Power Supply Options

- 110v single phase
- 220v single phase
- 240v 3 phase
- 460v 3 phase
- Gas Engine Drive
- Diesel Engine Drive
- Hydraulic Power Pack

ACCESSORIES / OPTIONS



DISCHARGE HOPPER/CHUTE



HOPPER DECK WITH BLADE



TRAILER TOW LIGHTS



CUSTOM HOPPERS



CUSTOM CONTROL PANELS



OPTIONAL CASTERS



WHEEL FENDERS



SUPER SACK SHREDDER

Componant Specifications

Troughing Idlers	4" OD CEMA C - 35 degree trough - Sealed
Return Rollers	3" OD with 5/8" Greasable Pillow Block Bearing
Belt Width	18 inches
Belt Effective Width	16 inches
Belt	2 Ply 150lb. 1/16in x 1/32in
Drive Pulley	8.75" OD 3/8" thick herringbone lagging
Drive shaft	1-7/16" OD
Tail Pulley	8" OD Crowned Winged
Tail Shaft	1-1/4" OD
Undercarriage coupler	2" Ball
Und. Hand pump Stroke output	1.21 Cubic inches per pump - double acting
Und. Cylinder	2.5" Bore
Axle	3500 lb. Capacity Axle. with 275 Radial Tire

1.5 HP 110/220v 1PH with 25:1 Gear Reducer

Horse Power	1.5
FLA - Motor Start Amps (empty belt)	15.5 amps (on 110v line)
Running Amps	9.7 amp (on 110v line)
Gearbox Reduction	25:1
Output Torque	1085 in. lbs.
Motor Service Factor	1.6
Belt Speed	Continuous 150 feet per minute
Max Weight Capacity on Belt	500 lbs.

GX160 Honda Gas Engine

Engine Size	160 CC (4.8 Horse Power)
Engine Start	Recoil
Engine Type	Air-cooled 4-stroke OHV
Fuel	Unleaded 86 octane or higher
Fuel Tank Capacity	3.3 U.S. qts (3.1 liters)
Oil Capacity	0.61 US qt. (0.58 L)
Belt Speed @ 3600 RPM	160 Feet Per Minute



560 S. Main Street
Clearfield, UT 84015

Toll Free: 800-453-2447
www.redlinesystem.com